



SRI INDU INSTITUTE OF PHARMACY

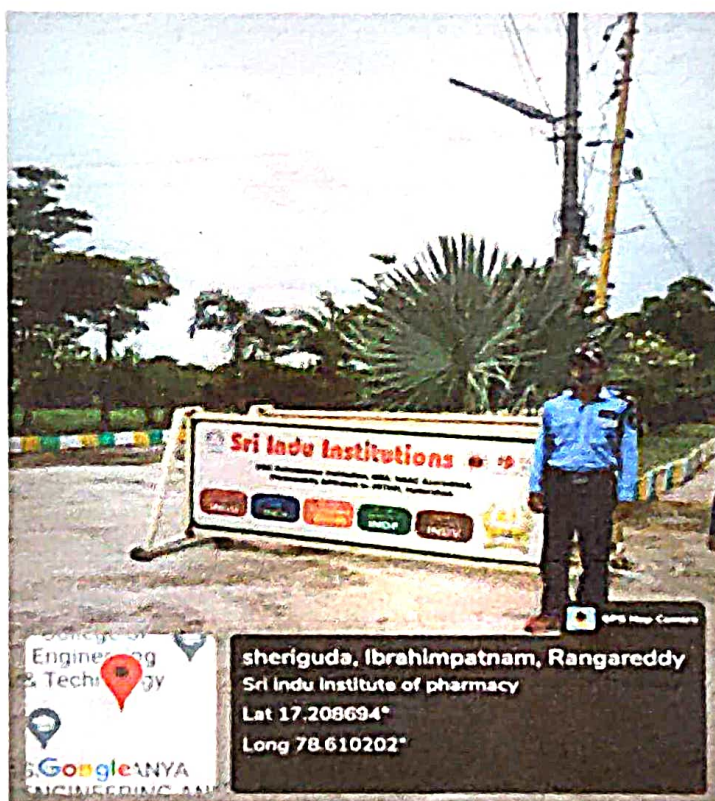
Sponsored by New Loyola Model Educational Society, Vanasthalipuram, Hyderabad.
(Approved by PCI - New Delhi, Affiliated to JNTUH- Hyderabad.)
Sheriguda, Ibrahimpatnam, R.R. Dist -501 510, Hyderabad, Telangana State.
Phone: 9391537555 Website : www.siip.ac.in Email ID : siipoffice@siip.ac.in

7.1.5 GREEN CAMPUS INITIATIVES

RESTRICTED ENTRY OF AUTOMOBILES:

Our Institution has implemented green-friendly practices, the automobiles entry into the campus is restricted and the sign boards are placed at the prominent places. Our College provides bus facility to students and staff.

All vehicles must be parked at parking area only provided at the entrance. No vehicle is allowed to enter into the campus. Many of our students availing public transport provided by the government based on their convenience. Our campus strictly maintaining the COVID check in visitors desk by security guards . The common bus stand has been contributed by our institutions and it is located beside our college campus.



RESTRICTED ENTRY OF VEHICLES INTO THE CAMPUS BY SECURITY THROUGH ROAD STOPPERS



PRINCIPAL
SRI INDU INSTITUTE OF PHARMACY
Sheriguda (V), Ibrahimpatnam (M),
R.R. Dist. Hyderabad-501 510.



SRI INDU INSTITUTE OF PHARMACY

Sponsored by New Loyola Model Educational Society, Vanasthalipuram, Hyderabad.
(Approved by PCI – New Delhi, Affiliated to JNTUH- Hyderabad.)
Sheriguda, Ibrahimpatnam, R.R. Dist -501 510, Hyderabad, Telangana State.
Phone : 9391537555 Website : www.slip.ac.in Email ID : slipoffice@slip.ac.in

7.1.5 – ECO-FRIENDLY CAMPUS POLICIES

INDEX

S.No	CONTENTS
1.	Policy Document on eco-friendly Campus
2.	Circulars
3.	Eco-friendly campus initiatives in campus
4.	Program conducted in college campus



A. M. S.
PRINCIPAL
SRI INDU INSTITUTE OF PHARMACY
Sheriguda (V), Ibrahimpatnam (M),
R.R. Dist. Hyderabad-501 510.



SRI INDU INSTITUTE OF PHARMACY

Sponsored by New Loyola Model Educational Society, Vanasthalipuram, Hyderabad.
(Approved by PCI – New Delhi, Affiliated to JNTUH- Hyderabad.)
Sheriguda, Ibrahimpatnam, R.R. Dist –501 510, Hyderabad, Telangana State.
Phone : 9391537555 Website : www.siip.ac.in Email ID : siipoffice@siip.ac.in

ECO-FRIENDLY CAMPUS POLICIES

Management, Sri Indu Institute of Pharmacy has always taken an eco-friendly agenda. It has shown remarkable awareness in maintaining an eco-friendly campus. On visiting the Campus, one can experience the aesthetic and elegant buildings, splendid lawns, spacious sports grounds and lush green environment conducive for teaching-learning process.

RESTRICTED ENTRY OF AUTOMOBILES

- The college operates a fleet of 10 buses covering each corner of Hyderabad to facilitate the students and staff. The institute encourages the staff and students to use the college transport instead of their own vehicles for safety, security, fuel conservation and to reduce environmental pollution. The college buses are checked for pollution by the authorized agency. The vehicles owned by faculty or students with pollution check stickers are permitted into the campus. For two wheelers or four wheelers, security measures are mandatory.

USE OF BICYCLES

- Students and staff coming from nearby villages also prefer bicycle as a mode of transport for attending the college. It is environment friendly and prevents pollution

PEDESTRIAN FRIENDLY PATHWAYS

- Vehicle parking space is provided at the main entrance of the college campus. As the campus is vehicle free with some exceptions, students and staff experience comfort walking through the pedestrian friendly pathways. The internal roads are lined with trees and solar lights and they are properly maintained by the campus maintenance committee.



SRI INDU INSTITUTE OF PHARMACY

Sponsored by New Loyola Model Educational Society, Vanasthalipuram, Hyderabad.
(Approved by PCI – New Delhi, Affiliated to JNTUH- Hyderabad.)
Sheriguda, Ibrahimpatnam, R.R. Dist -501 510, Hyderabad, Telangana State.
Phone : 9391537555 Website : www.silp.ac.in Email ID : silpoffice@silp.ac.in

BAN ON USE OF PLASTIC

- Single-use plastic items such as plastic bottles, bags, spoons, straws and cups are banned completely and awareness is created among staff and students through orientation and display boards in the premises. To restrict the use of plastic, measures have been taken to replace plastic tea cups and glasses with steel glasses in the canteen. The staff and students are informed to use steel or copper water bottles instead of plastic bottles.
-

TREES AND PLANTATION

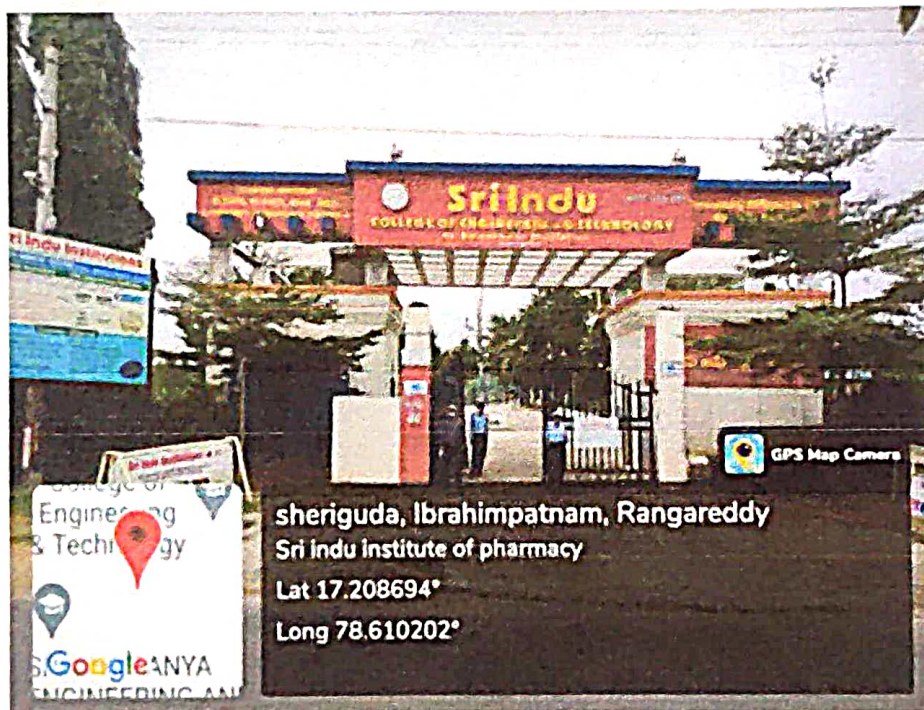
- Landscaping of the college is worth seeing and reflects aesthetic sense. The institute has a canopy of trees and plants to make the environment pollution free to safeguard the health of all the inmates. The lawns and the trees provide shade and beautiful ambience. Utmost care is taken to develop and maintain green landscaping by trained gardeners and supervisor. The construction, maintenance and beautification committee constituted in the college looks after the development and maintenance of the greenery in the campus.



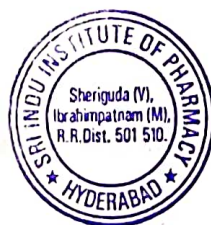
A. M. S.
PRINCIPAL
SRI INDU INSTITUTE OF PHARMACY
Sheriguda (V), Ibrahimpatnam (M),
R.R. Dist. Hyderabad-501 510.



REGULAR COVID PRECAUTIONARY CHECK BY SECURITY STAFF

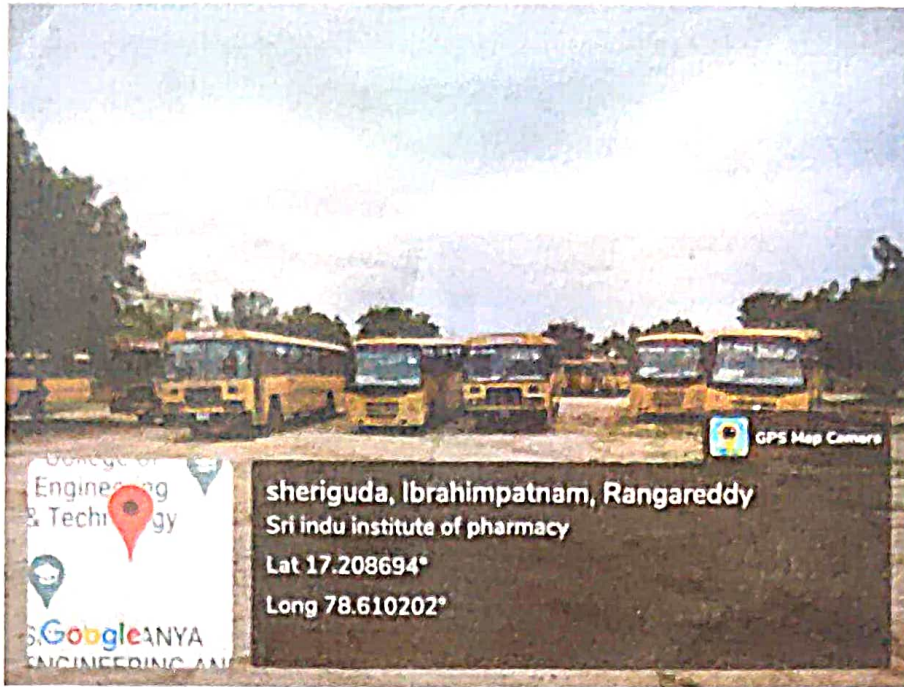


RESTRICTED ENTRY OF VEHICLES INTO THE CAMPUS BY SECURITY



A.M.S. **PRINCIPAL**
SRI INDU INSTITUTE OF PHARMACY
Sheriguda (V), Ibrahimpatnam (M),
R.R. Dist. Hyderabad-501 510.

PARKING PLACES ARE CLEARLY DEMARCATED



BUS PARKING BAY



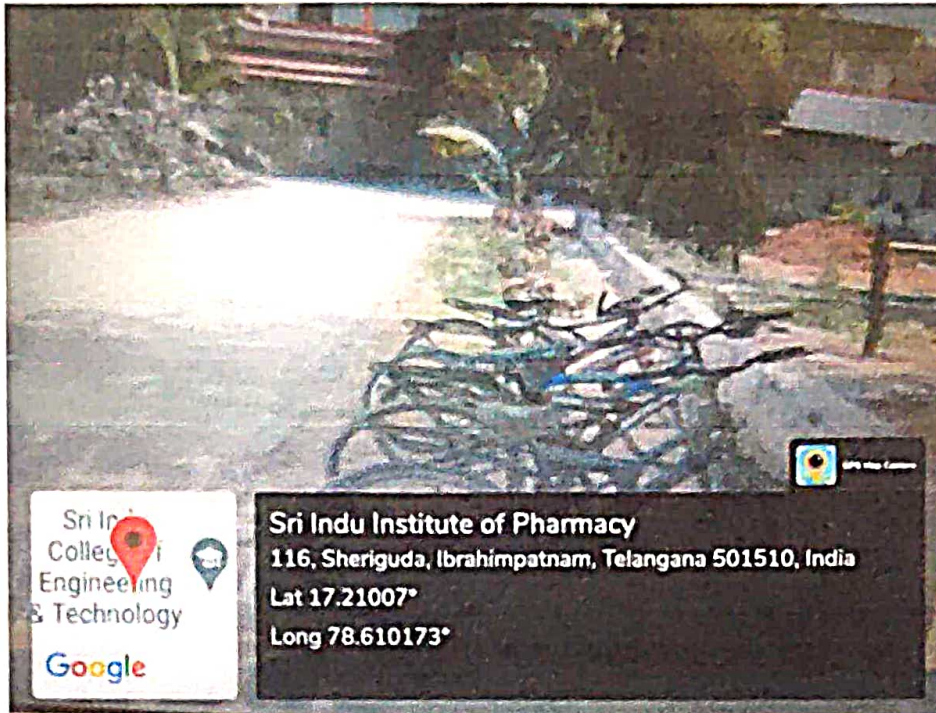
VEHICLE PARKING IN SHEDS



A. M. V.
PRINCIPAL
SRI INDU INSTITUTE OF PHARMACY
Sheriguda (V), Ibrahimpatnam (M),
R.R. Dist. Hyderabad-501 510.

USE OF BICYCLES/ BATTERY POWERED VEHICLES

Students and staff coming from nearby villages also prefer bicycle as a mode of transport for attending the college. It is environment friendly and prevents pollution.



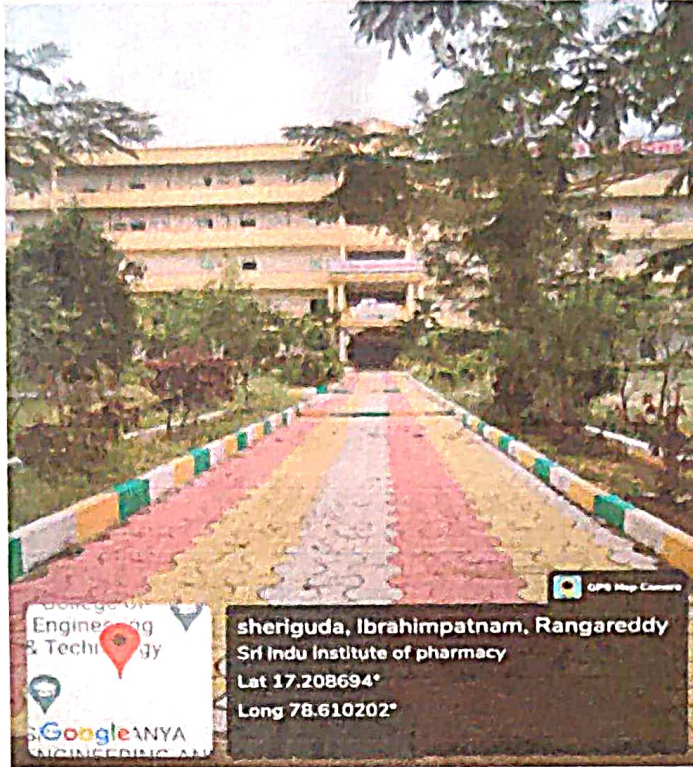
USE OF BICYCLES IN CAMPUS



A. M. S.
PRINCIPAL
SRI INDU INSTITUTE OF PHARMACY
Sheriguda (V), Ibrahimpatnam (M),
R.R. Dist. Hyderabad-501 510.

PEDESTRIAN FRIENDLY PATHWAYS

Vehicle parking space is provided at the main entrance of the college campus. As the campus is vehicle free with some exceptions, students and staff experience comfort walking through the pedestrian friendly pathways. The internal roads are lined with trees and solar lights and they are properly maintained by the campus maintenance committee.



PEDESTRIAN FRIENDLY PATHWAYS

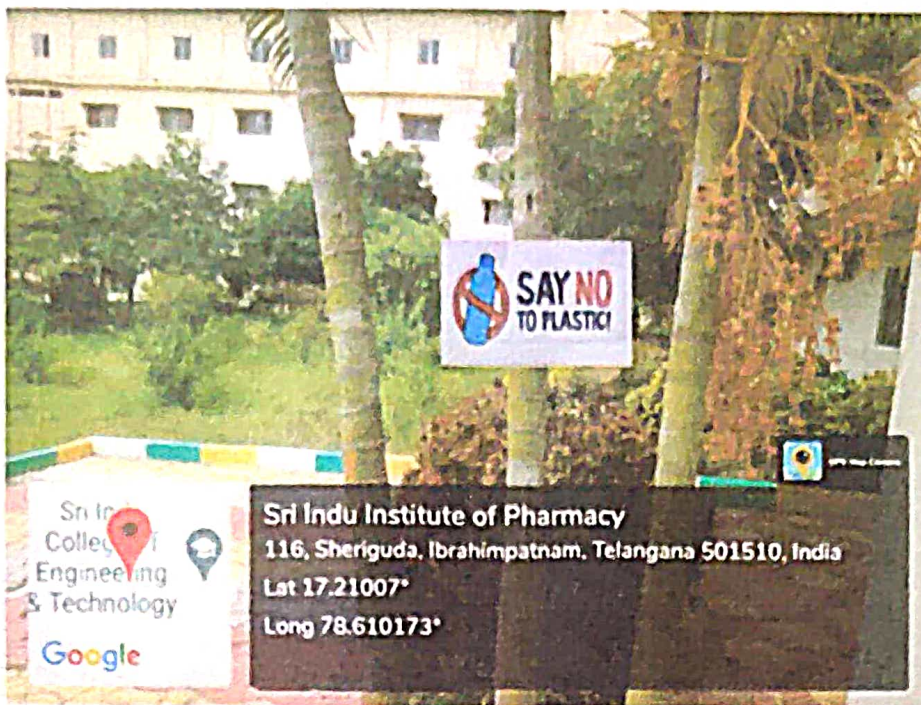


PEDESTRIAN FRIENDLY PATHWAYS IN COLLEGE CAMPUS



A. M. S.
PRINCIPAL
SRI INDU INSTITUTE OF PHARMACY
Sheriguda (V), Ibrahimpatnam (M),
R.R. Dist. Hyderabad-501 510.

INFORMATIVE BOARDS ARE PLACED AT ENTRANCE AND CORRIDORS



RAGGING AWARENESS DISPLAYS

SRI INDU INSTITUTE OF PHARMACY
IBRAHIMPATNAM, R.R. DIST. HYDERABAD

RAGGING IS A PUNISHABLE OFFENCE! DON'T INDULGE IN RAGGING

SAY NO TO RAGGING

WHAT IS RAGGING?
ANY ACT OF HARASSMENT
-MENTAL/PHYSICAL/SEXUAL ABUSE
-VERBAL ABUSE
-INDECENT BEHAVIOR
-CRIMINAL INTimidATION/WRONGFUL RESTRAINT
-UNDERMINING HUMAN DIGNITY
-FINANCIAL EXPLOITATION
-EXTORTION
-USE OF FORCE

STOP RAGGING!
A STUDENT INVOLVED IN RAGGING CASE IS
-EXPELLED FROM THE INSTITUTION
-RANGE FROM THE HOSTEL
-INSURER SCHOLARSHIP CAN BE WITHDRAWN
-DEBARRED FROM EXAMINATIONS
-PROSECUTED FOR CRIMINAL ACTION
-INSTITUTION HAVE BEEN ASKED TO FILE THE FIR WITH LOCAL POLICE AGAINST THOSE WHO RAG/ABET RAGGING

JOIN HANDS TO MAKE YOUR CAMPUS RAGGING FREE

CONTACT NO of Principal - 9448785348
Director - 9800400070
Female Representative - 9800207043
Male Representative - 982282744
Student Representative - 9800000000
Ibrahimpatnam P.S O.I. - 9496817232

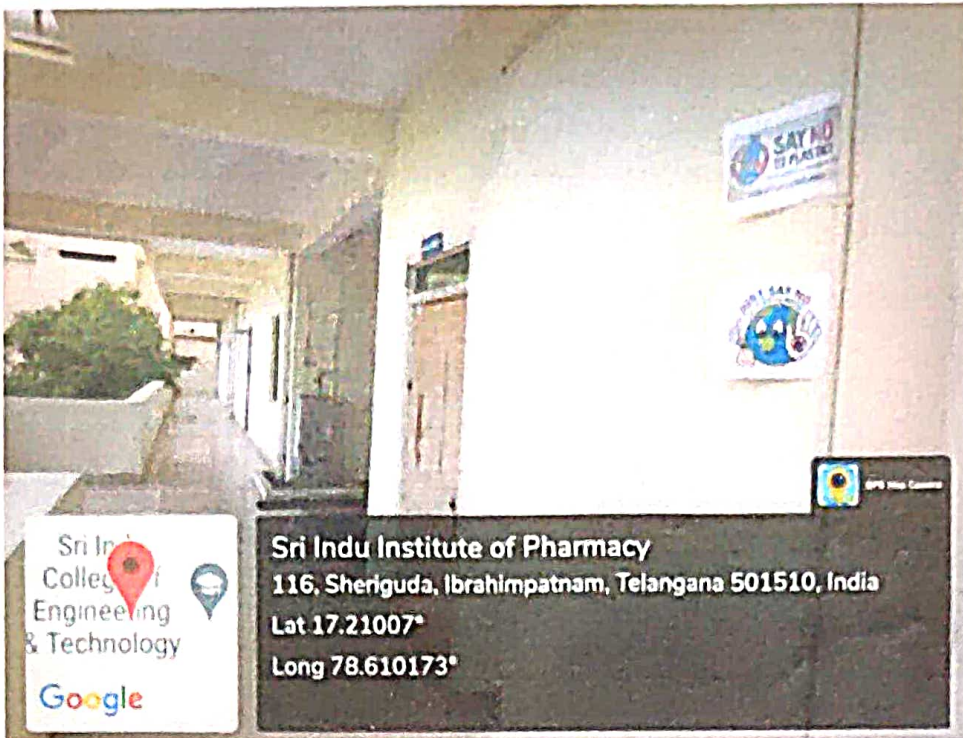
sheriguda, Ibrahimpatnam, Rangareddy
Sri Indu Institute of pharmacy
Lat 17.208694°
Long 78.610202°

A.M.M.



PRINCIPAL
SRI INDU INSTITUTE OF PHARMACY
Sheriguda (V), Ibrahimpatnam (M),
R.R. Dist. Hyderabad-501 510.

SIGN BOARDS ARE PLACED IN THE CAMPUS



SIGN BOARDS DISPLAY IN CANTEEN



PLASTIC FREE CAMPUS ENVIRONMENT



PRINCIPAL
SRI INDU INSTITUTE OF PHARMACY
Sheriguda (V), Ibrahimpatnam (M),
R.R. Dist. Hyderabad-501 510.

LANDSCAPING WITH TREES AND PLANTS

Landscaping of the college is worth seeing and reflects aesthetic sense. The institute has a canopy of trees and plants to make the environment pollution free to safeguard the health of all the inmates. The lawns and the trees provide shade and beautiful ambience. Utmost care is taken to develop and maintain green landscaping by trained gardeners and supervisor. The construction, maintenance and beautification committee constituted in the college looks after the development and maintenance of the greenery in the campus.



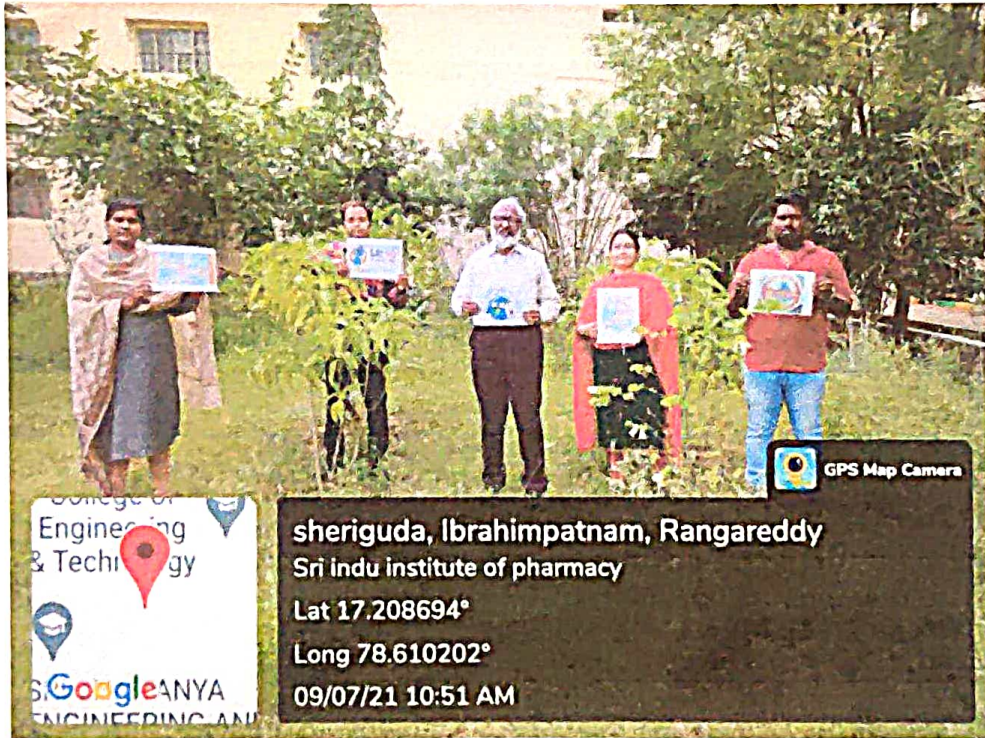
TREES IN-FRONT OF MAIN BLOCK



A. N. S.
PRINCIPAL
SRI INDU INSTITUTE OF PHARMACY
Sheriguda (V), Ibrahimpatnam (M),
R.R. Dist. Hyderabad-501 510.



PLASTIC FREE GARDEN IN CAMPUS



Amr
PRINCIPAL
SRI INDU INSTITUTE OF PHARMACY
Sheriguda (V), Ibrahimpatnam (M),
R.R. Dist. Hyderabad-501 510.