

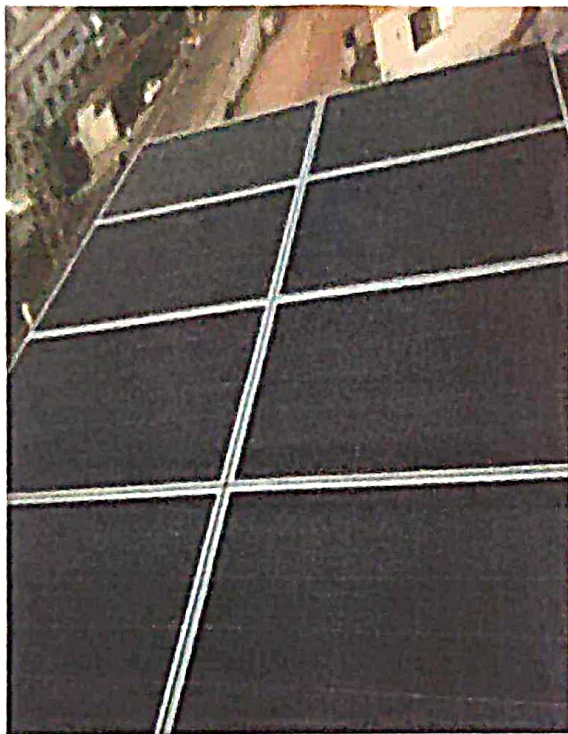


SRI INDU INSTITUTE OF PHARMACY

Sponsored by New Loyola Model Educational Society, Vanasthalipuram, Hyderabad.
(Approved by PCI - New Delhi, Affiliated to JNTUH- Hyderabad.)
Sheriguda, Ibrahimpatnam, R.R. Dist -501 510, Hyderabad, Telangana State.
Phone: 9391537555 Website : www.siip.ac.in Email ID : siipoffice@siip.ac.in

7.1.2: THE INSTITUTION HAS FACILITIES FOR ALTERNATE SOURCES OF ENERGY AND ENERGY CONSERVATION MEASURES

1. Solar Energy and Wheeling to the grid:

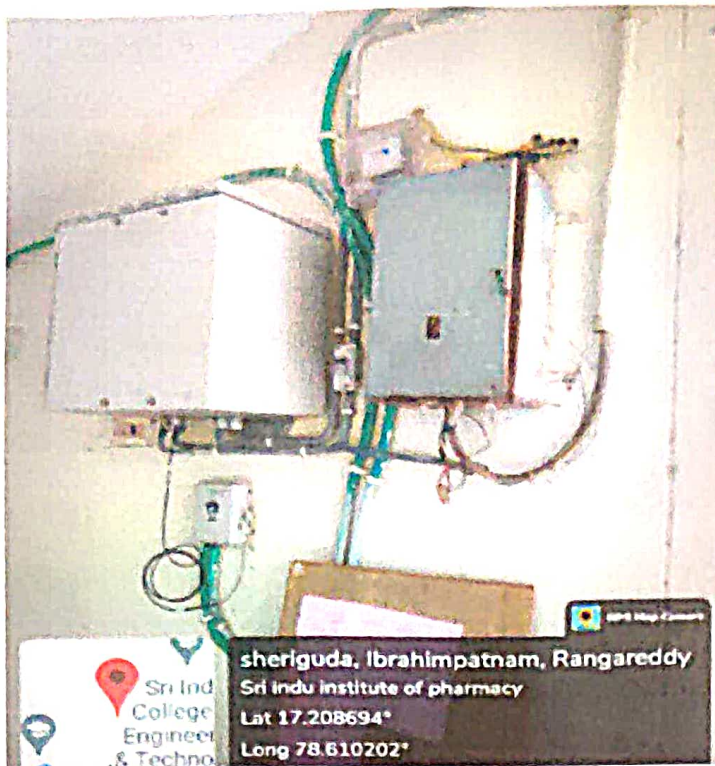


Solar Photovoltaic

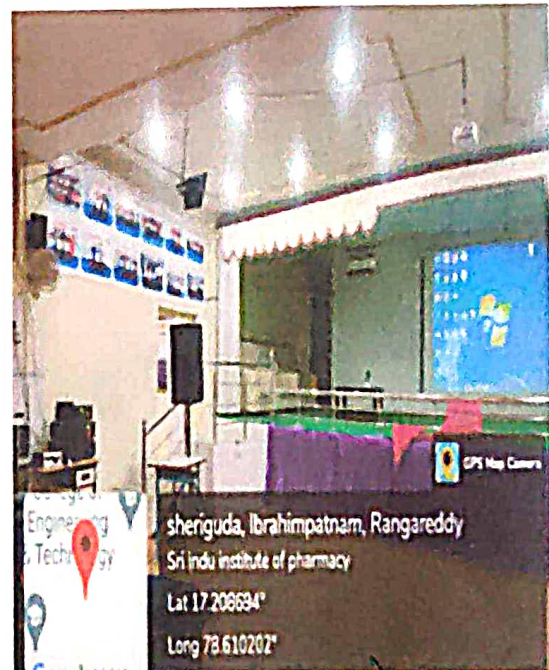
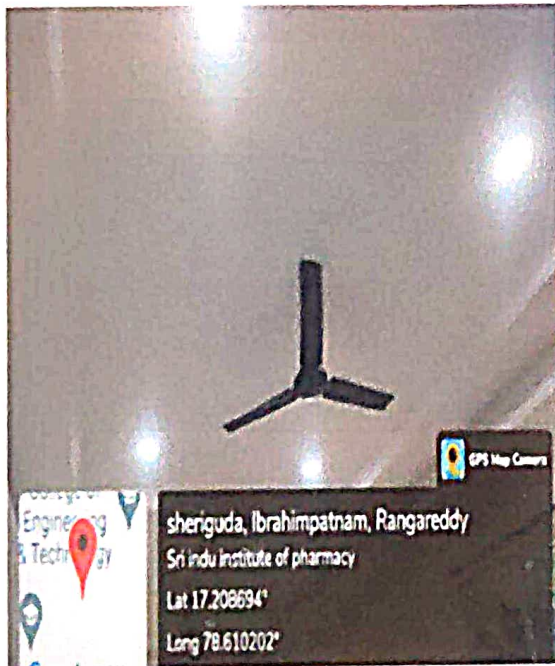


A. Anand
PRINCIPAL
SRI INDU INSTITUTE OF PHARMACY
Sheriguda (V), Ibrahimpatnam (M),
R.R. Dist. Hyderabad-501 510.

2. Wheeling to the grid



3. Led light power saving conservation indoor areas



Amit
PRINCIPAL
SRI INDU INSTITUTE OF PHARMACY
Sheriguda (V), Ibrahimpatnam (M),
R.R. Dist. Hyderabad-501 510.

Led light power saving conservation outdoor areas



A. Mani
PRINCIPAL
SRI INDU INSTITUTE OF PHARMACY
Sheriguda (V), Ibrahimpatnam (M),
R.R. Dist. Hyderabad-501 510.